

# THREE PHASE

## Meter

GÉRÉDIS LINKY METER  
OPERATING INSTRUCTIONS



# The Linky meter in detail

A GÉRÉDIS Linky meter has just been installed in your property.

This document will tell you how it is to be used.

For more information, feel free to go to the website [www.linkygeredis.fr](http://www.linkygeredis.fr)



## BOOKLETS WITH MORE INFORMATION

To find out more about deployment, understand the benefits of the new meter, know how to access your customer area or find tips about optimising consumption, **you could also review information booklets 1 and 2** which have been supplied to you and which are available on the website.



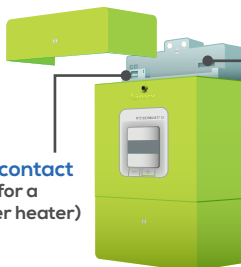
INDICATES THE QUANTITY OF ELECTRICITY CONSUMED:  
1 flash per Wh consumed

2

DISPLAY:  
shows meter information

1

Dry contact  
(e.g. for a water heater)



UNDER THE COVER

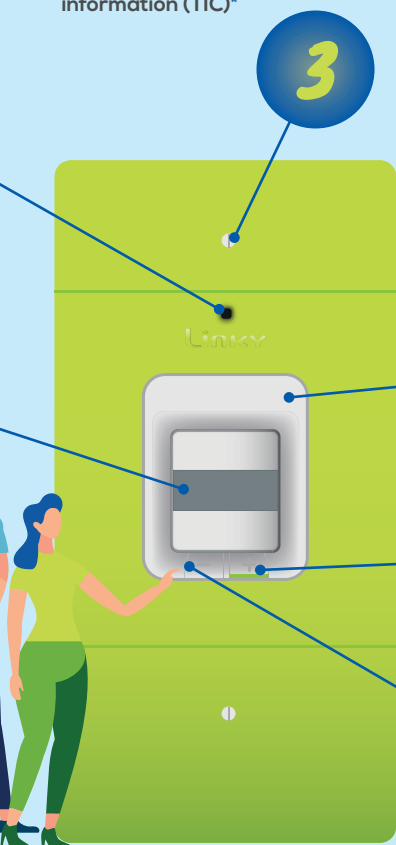
Remote customer information (TIC)\*





### COVER OPENING CLIP:

allows access to the dry contact, its fuse and remote customer information (TIC)\*



3

4

5

6

### FOR YOUR SAFETY

- **The meter is supplied with power**, even when you switch off the current with the circuit breaker; do not attempt to dismantle or move it.
- **The meter is connected to visible or concealed wires**; never drill the area around it before making sure that they will not be damaged (serious risk of electrocution or fire).
- **Whenever you carry out electrical work in your internal installation**, always switch off the power to the circuit breaker, even if the Linky meter is no longer powered.
- **When you ask for an increase in the contractual power rating**, you will remain responsible for making sure that your installation after the circuit breaker has the permissible capacity.

### METER NUMBER:

is the number indicated in your bill

### POWER BACK ON ASSISTANCE INDICATOR:

is on when you are permitted to put the meter back into service

### SELECTION KEY:

scrolls information on the meter

\* Remote customer information (TIC) is a meter output provided for your use. It is reserved for you, and will allow you to retrieve digital information from the meter by logging into it using appropriate equipment. For more information about the TIC output, view the website.

# The display available on the GÉRÉDIS Linky meter

Use the selection buttons + and - to scroll the information you can see directly on the display of your meter.

## Screens that can be scrolled on the display

0 KWH BASE  
1 CONSUMPTION  
INDEX

- +

### 1 CONSUMPTION INDEX

Indicates your consumption in the time slots defined in your contract: 1 index per slot.

BASE  
NAME OF CONTRACT

- +

### 2 NAME OF CONTRACT

Name of your contract with your supplier.

0 VA  
DEMAND

- +

### 3 DEMAND

Power currently used by your installation.

0 VA  
MAX POWER

- +

### 4 MAX POWER

Maximum power demand from the start of the day. The value is reset every day.

9 KVA  
REF POWER RATING

- +

### 5 REF POWER

Power rating you have subscribed for with your supplier.

9000 KVA  
BREAKING POWER

- +

### 6 BREAKING POWER

Maximum power you can reach. This is the value used for checking power overruns (with tolerance).

0000000000  
SUPPLY POINT  
NUMBER

- +

### 7 SUPPLY POINT NUMBER

Reference of your supply point. It is currently not used, and is set to 0 by default.

16:20:15  
CURRENT TIME

- +

### 8 / 9 CURRENT TIME AND DATE

Time and date known to the meter. The meter time is set automatically by the system.

17/07/21  
CURRENT DATE

- +

### 10 DRY CONTACT

Specifies the current position of the dry contact (open or closed). It may control some of your appliances, particularly your water heater.

OPEN  
DRY CONTACT

- +

HISTORY  
TIC MODE

- +

### 11 TIC MODE

Current configuration of the TIC output (history or standard).

0 KWH  
DISTRIBUTOR INDEX

- +

### 12 DISTRIBUTOR INDEX

Indicates your consumption during the time slots used for billing electricity distribution.

012345678912  
SERIAL NUMBER

- +

### 13 SERIAL NUMBER

Provides the 12 digits of the meter serial number.

0 KWH  
INJECTION INDEX

- +

### 15 INJECTION INDEX

Indicates the electricity generated and injected into the grid.

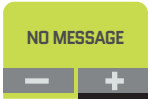


### 16 INDEX DISABLED 2, 3, 4 ... 10

Index not used as part of your contract.

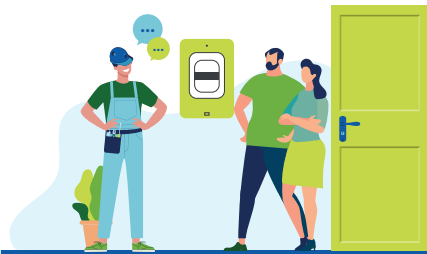
### 17 / 18 MID CHECKSUM ERROR REGISTRY

For use by maintenance only.



### 19 NO MESSAGE

Shows that there is no particular message relating to the position of your installation.



## Messages

Depending on the position of your power supply, the meter will help you through messages.

Here are the three main messages you may come across depending on your position.

Note that if your power supply is normal, then this message screen is shown at position 19 as indicated in the list to the left.



### POWER OVERRUN

The power demand of your installation exceeds the permissible power. Disconnect some appliances and power by pressing the + button of the meter for two seconds.



### CONTACT YOUR SUPPLIER

Contact a supplier to subscribe a contract or contact your current supplier to solve the problem.



### ENERGY AVAILABLE

You have temporary access to electricity. Restore power by pressing the + button of the meter for two seconds. For lasting access to electricity, remember to subscribe a contract with a supplier.

## Pictograms

### CURRENT INDEX INDICATOR

Indicates the index of the contract under which your consumption is currently saved.

### NO PHASE INDICATOR

Error in the electricity system; please contact our customer service line.

### GRID INJECTION INDICATOR

Displayed if your installation is currently injecting electricity into the grid.

### PRODUCER MODE ENABLED INDICATOR

Indicates that your meter is also configured for managing your electricity production.

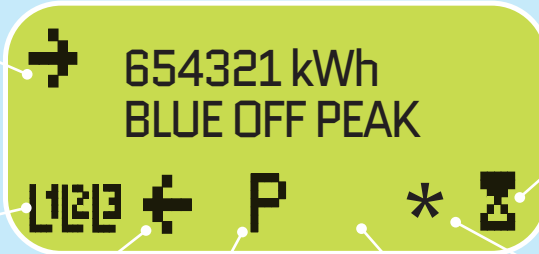
### BREAKING COMPONENT OPEN INDICATOR

### CURRENT POWER OVERRUN INDICATOR

### MOBILE PEAK NOTICE PRESENCE

Used if you have a load management tariff, such as EJP, TEMPO or other.

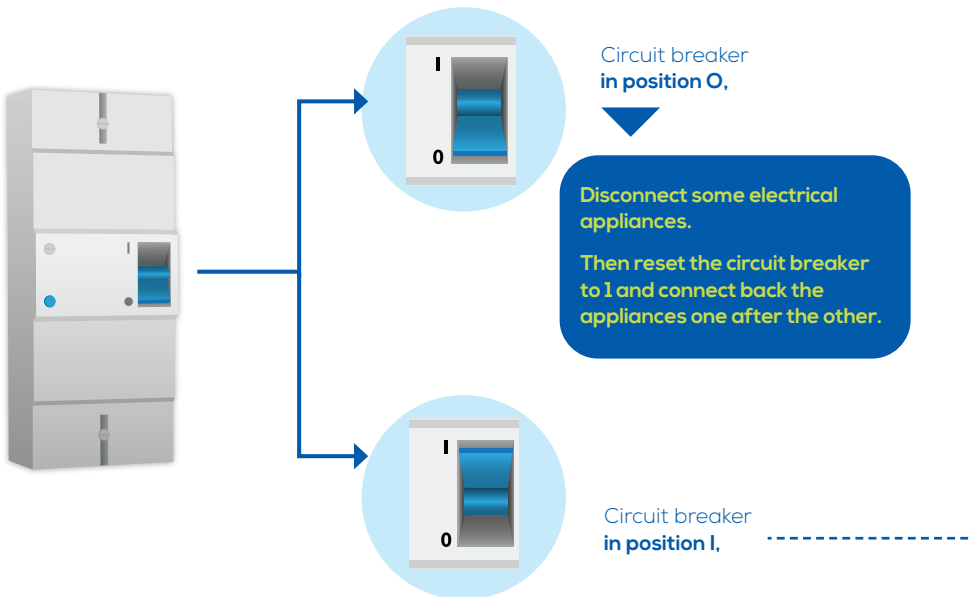
### FOR USE BY MAINTENANCE ONLY



# Troubleshooting

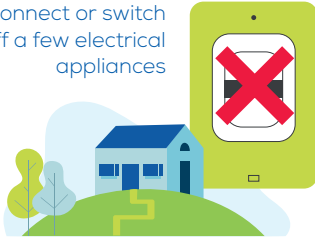
Check your electrical switchboard

Check your circuit breaker



### Meter out of range

Disconnect or switch off a few electrical appliances



5  
seconds

Set the circuit breaker to O, wait for 5 seconds, and then set the circuit breaker back to I. This manoeuvre is equivalent to pressing the + button on the meter and is understood by the meter as an instruction to close the breaking component.

### Meter in range

See the meter display by pressing on the button 



**POWER OVERRUN  
PRESS BUTTON**

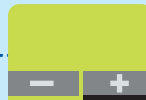


Disconnect a few electrical appliances and then press the button 

**CONTACT YOUR  
SUPPLIER**



Call your electricity supplier



You have experienced a power failure.

**CUSTOMER  
SERVICE TEL  
UPSTREAM VOLTAGE  
SURGE**



To make troubleshooting easier, check with your neighbours before calling out customer service line.

**IF YOU STILL HAVE  
NO ELECTRICITY AFTER THESE  
OPERATIONS, PLEASE CONTACT  
OUR CUSTOMER SERVICE LINE  
0 969 321 411**

# GÉRÉDIS Linky, a local generator



IN THE EVENT OF A FAILURE OR A RISKY SITUATION:

**0 969 321 411**

24/7 customer assistance

FOR ANY QUERIES ABOUT THE GÉRÉDIS LINKY METER:

 [linky@geredis.fr](mailto:linky@geredis.fr)

 17 rue des Herbillaux - CS 18840  
79028 NIORT CEDEX

 [www.linkygeredis.fr](http://www.linkygeredis.fr)

 **0 801 90 22 04** Free service  
& call



GÉRÉDIS is the manager of the electricity distribution system of SIEDS, and makes connections, offers customer service, meter reading and all technical operations. The task of GÉRÉDIS is to offer objective, transparent and non-discriminatory access to the system and guarantee the quality of your power supply regardless of your supplier. GÉRÉDIS Deux-Sèvres - CS 18840 - 79028 NIORT CEDEX SASU with capital of €35.550.000 - RCS Niort 503 639 643



**10-31-3162 / PEFC certified** / This product is made from materials derived from responsibly managed forests and controlled sources. / [pefc-france.org](http://pefc-france.org)