

BOOKLET

2



THE METER AND YOU



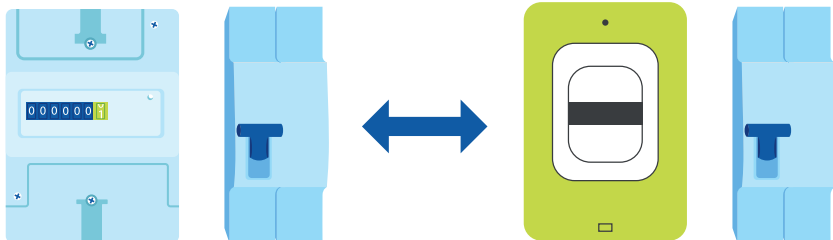
01

WORKING OF THE METER



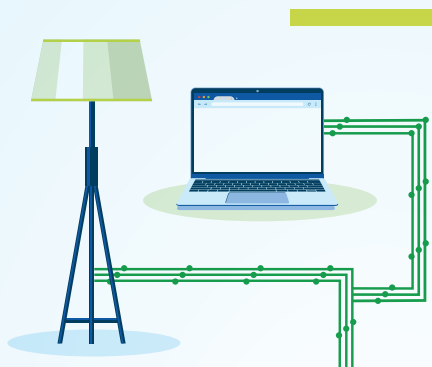
A GÉRÉDIS Linky smart meter will soon be installed in your home. Let us take a look at its general operating principles.

The new meter is of the same size as the old one, and uses the same connections. That means that it simply replaces the existing meter. **You have nothing to prepare for the installation, other than providing access to your meter.**



- ▶ The circuit breaker will be kept, since it will continue to protect your installation in the event of a short circuit.

Communication circuit



The meter meters the power for your entire home. Metering and power control follow the same standards as your former meter.

The added benefit of GÉRÉDIS Linky is that it communicates.



Meter readings are encrypted and reported every day. The exchange only lasts a few minutes every night, and is carried out by a communication circuit that uses the electricity system and mobile networks. Once received, the information is only available in a dedicated GÉRÉDIS system that is hosted and protected by us in Deux-Sèvres. The data aggregated over the scope of GÉRÉDIS are then used to optimise the system and control it more efficiently.

THE METER AND YOU



02

BENEFITS OF THE METER

GÉRÉDIS Linky meters offer a series of benefits for you, the user, and for us, the manager of your electricity distribution system.



BETTER UNDERSTANDING OF YOUR CONSUMPTION

The daily reading is available in your GÉRÉDIS Linky customer area and offers a detailed view of consumption.

With a smart meter, you have access to a daily calculation of the energy consumed in your home. If you wish, you can even obtain more precise information, with a measurement every 30 minutes.

GENERATION MADE EASIER

GÉRÉDIS Linky meters can integrate power from renewable sources installed in the home, such as photovoltaic panels. With no other equipment, **you can easily integrate the power you generate and reduce your electricity bill.**



IMPROVED QUALITY OF YOUR ELECTRICITY SUPPLY

Thanks to the communication circuit, GÉRÉDIS detects failures more easily and responds more effectively and speedily.

Besides, the meter can protect your installation from voltage surges. Your appliances and equipment are thus protected from an incident in the system.

Lastly, our knowledge of energy flows in the system enables us to better target investment and limit power losses relating to our distribution activity.



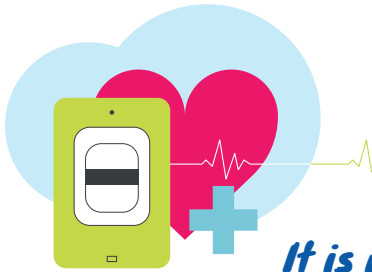
SIMPLIFIED FORMALITIES

With their ability to communicate, GÉRÉDIS Linky meters make routine operations easier.

- ▶ The meter is read without bothering you, and there is no need for a reader to enter your home.
- ▶ Moving and contract amendment formalities are simplified, and can be completed remotely, quickly and for a low cost.
- ▶ Your bill is based on your actual consumption and not on estimates.
- ▶ You can benefit from new supply offers that are better suited to your needs and your consumption habits.

03

COMMON MISCONCEPTIONS



It is not safe for the health

There are those who claim that Linky meters emit waves harmful to health.

FALSE

Research by independent laboratories and national agencies have demonstrated that **its emissions are even below those of most household appliances**: 800 times below those of a refrigerator or a toaster and equivalent to a telephone charger.



It collects personal data

The meter allegedly collects and discloses private user data.

FALSE

It is protected by the same security standards as banking or defence applications.

The measured energy data is your absolute property. You select the data that are collected, and to whom they are circulated.

It is billed additionally, and leads to extra costs

The installation of a smart meter is said to be expensive, with unpleasant surprises in future power bills.

FALSE

We pay for installing the meter, and you will not be charged for it.

The consumption and subscription of your power contract remain unchanged. **On the contrary, you could save money by controlling your consumption.**



It is a fire hazard

Installation and the meter are said to be a fire hazard.

FALSE

The Linky meter **has undergone a number of safety tests**. When it is installed, GÉRÉDIS carefully inspects the work of its contractors on the basis of proven quality standards.



You have a right to turn down the meter

Under the regulations, users may oppose the installation of a smart meter.

FALSE

GÉRÉDIS is under the obligation to install them in homes in Deux-Sèvres according to the Energy Code.

However, any refusals will be considered and lead to **dialogue** with the user.



GÉRÉDIS Linky, a local generator



© GÉRÉDIS - PEFC - 06 / 2022 - D-R3-SU-9-A

ZIMAGES - Adobe-stock



Every stage of the GÉRÉDIS Linky project has a supporting document.

CONTACT US

 linky@geredis.fr

 17 rue des Herbillaux - CS 18840
79028 NIORT CEDEX

 www.linkygeredis.fr

 **0 801 90 22 04** Free service
& call



GÉRÉDIS is the manager of the electricity distribution system of SIEDS, and makes connections, offers customer service, meter reading and all technical operations. The task of GÉRÉDIS is to offer objective, transparent and non-discriminatory access to the system and guarantee the quality of your power supply regardless of your supplier.

GÉRÉDIS Deux-Sèvres - CS 18840 - 79028 NIORT CEDEX
SASU with capital of €35,550,000 - RCS Niort 503 639 643

