

BOOKLET

1



## DEPLOYMENT OF GÉRÉDIS LINKY



# 01 MORE ABOUT US

The smart meter deployment campaign is being carried out by GÉRÉDIS in our département.



## A LOCAL PLAYER

**GÉRÉDIS** is the main electricity distributor in Deux-Sèvres. We are a local distribution company, with close to 200 employees dedicated to the task of supplying electricity to 160,000 homes on a 24/7 basis. Thus, we work in 256 municipalities from our 5 local agencies, and manage a system making up 14,000 kilometres of lines.



200 employees



160,000 homes



256 municipalities powered



5 branches



14,000 km of lines



## Timeline

**SIÉDS**  
Fédérateur d'énergies

In 1923, an electricity syndicate was set up by elected officials to speed up the electrification of towns and villages in Deux-Sèvres. In order to pool human, technical and financial resources, they set up SIÉDS in 1927. In the early 2000s, the opening of competition across Europe led to a complete reorganisation of the market. The supply and distribution of electricity were split. As a result, two distinct companies were created in our département: SÉOLIS for supply and GÉRÉDIS for distribution.

Even as GÉRÉDIS adapted to its changing GÉRÉDIS environment, the company stayed true to the spirit of its founders. Namely the idea of providing local support, dialogue and high-quality public service for all users.

GÉRÉDIS,  
a particularity of the Deux-Sèvres ▶



### THE MISSIONS OF GÉRÉDIS

Operating and maintaining the system

Developing and modernising the system

Providing customer connections

Managing contracts to provide access to the system  
(metering and reading, customer service, invoicing, etc.)

DEPLOYMENT OF GÉRÉDIS LINKY





# THE RATIONALE FOR A NEW GENERATION OF METERS



The installation of a smart meter in each home in the European Union addresses an environmental requirement. By extension, digital technology improves the service offered to customers.



1920



1980



Today

---

## A REGULATORY PROGRAMME

---

The roll-out of smart meters was decided on the European level in 2009. Many countries have started or even finished deployment. In France, it is part of the **Energy Transition and Green Growth act of 2015**. 35 million French homes are affected.



# Contributing to fighting global warming

This *worldwide* deployment is first and foremost aimed at contributing to the fight against global warming.

## How?

In an electricity system, **the energy transition is extremely impactful**. The increasing generation of renewable energy, changing power consumption habits and the development of new uses (electric vehicles, household generation, etc.) **call for modernisation and more flexibility**.

Over 50% of the energy consumed in our country is produced sustainably.

The aim is to optimise local consumption of locally generated power.

Because it can communicate, **a smart meter is the first tool for that transformation towards the electricity systems of the future**.

## Improving electricity distribution

The new meter also enables us to improve the distribution of power to users.



Better understanding of consumption



Simplified formalities/  
no need to disturb the user



More reliable billing



Protection of installations and faster troubleshooting



The deployment of the new meters is consistent with our values of local public service: responsiveness, benevolence and consultation.

## PRACTICAL MODALITIES OF INSTALLATION

### A GÉRÉDIS Linky meter is about to be installed in your home.

You have been fully informed in advance, in three letters containing information and explanation. The cost of installation will be paid by GÉRÉDIS. It will take 30 minutes of work after the electricity is switched off. At the end of the process, the technician will also take some time to tell you more about the working of the meter and to answer your questions.



We have selected two specialist operators on the basis of quality criteria. They are trained by GÉRÉDIS staff, and are regularly audited and inspected throughout the operation. The technicians of our partners have GÉRÉDIS Linky Contractor identification cards, and can be identified through the GÉRÉDIS Linky contractor marking on their vehicles.

# Deployment schedule

2021 › 2026

## SEE

the detailed schedule  
and map by municipality ▶  
on our website

[www.linkygeredis.fr](http://www.linkygeredis.fr)



## LINKY BY GÉRÉDIS

In Deux-Sèvres, smart meters are put in place according to our own methods, those of the GÉRÉDIS Linky project, based on responsiveness and dialogue. Thus, our task is to give you the most accurate information possible about each stage of deployment.

This includes brochures, letters, website, videos, local media, etc. We provide you with all our resources to enable you to understand the project and the legitimate questions it raises.

We have met with your elected officials, some of whom are involved in our governance, very early on in the process, and shared information with them.



GÉRÉDIS is a local corporate citizen, which leverages its in-depth knowledge of the area and its players to develop this major project.

To that end, please note that:

- the meters that are removed are reprocessed in Deux-Sèvres by organisations promoting rehabilitation through the economy;
- the meters are manufactured in three facilities in western France.

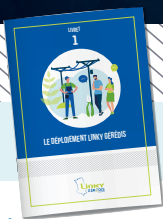
DEPLOYMENT OF GÉRÉDIS LINKY



# GÉRÉDIS Linky, a local generator



ZIMAGES - Adobe-stock © GÉRÉDIS - PEFC - 06 / 2022 - D-R3-SU-8-A



Every stage of the GÉRÉDIS Linky project has a supporting document.

## CONTACT US

 [linky@geredis.fr](mailto:linky@geredis.fr)

 17 rue des Herbillaux - CS 18840  
79028 NIORT CEDEX

 [www.linkygeredis.fr](http://www.linkygeredis.fr)

 0 801 90 22 04 



GÉRÉDIS is the manager of the electricity distribution system of SIEDS, and makes connections, offers customer service, meter reading and all technical operations. The task of GÉRÉDIS is to offer objective, transparent and non-discriminatory access to the system and guarantee the quality of your power supply regardless of your supplier. GÉRÉDIS Deux-Sèvres - CS 18840 - 79028 NIORT CEDEX SASU with capital of €35,550,000 - RCS Niort 503 639 643



**PEFC** 10-31-3162 / PEFC certified / This product is made from materials derived from responsibly managed forests and controlled sources. / [pefc-france.org](http://pefc-france.org)