

BOOKLET

4



SAVING ENERGY





With the GÉRÉDIS Linky meter, you have a unique view of your power consumption. That knowledge can help you adapt your behaviour and save money.

The GÉRÉDIS Linky meter allows you to see your consumption data from your secure customer area. Thanks to that granular view of how you use electricity, you can identify the behaviours that could be optimised.

**IS YOUR TARIFF SUITED TO YOU?**  
**WHICH DEVICES HAVE THE HIGHEST POWER REQUIREMENTS?**  
**SHOULD YOU ADJUST THEIR STARTING TIMES?**  
**IS YOUR POWER RATING APPROPRIATE?**  
**IS YOUR SUBSCRIPTION SUITED TO YOUR NEEDS?**

**Example:**

You can **see** your **consumption curve**, which is the average quantity of energy used by your installation by day or by week. If the power requirement is far below the subscribed rating or if that rating is exceeded when all your equipment is operating, you can contact your supplier for a contract amendment. That can be done remotely.

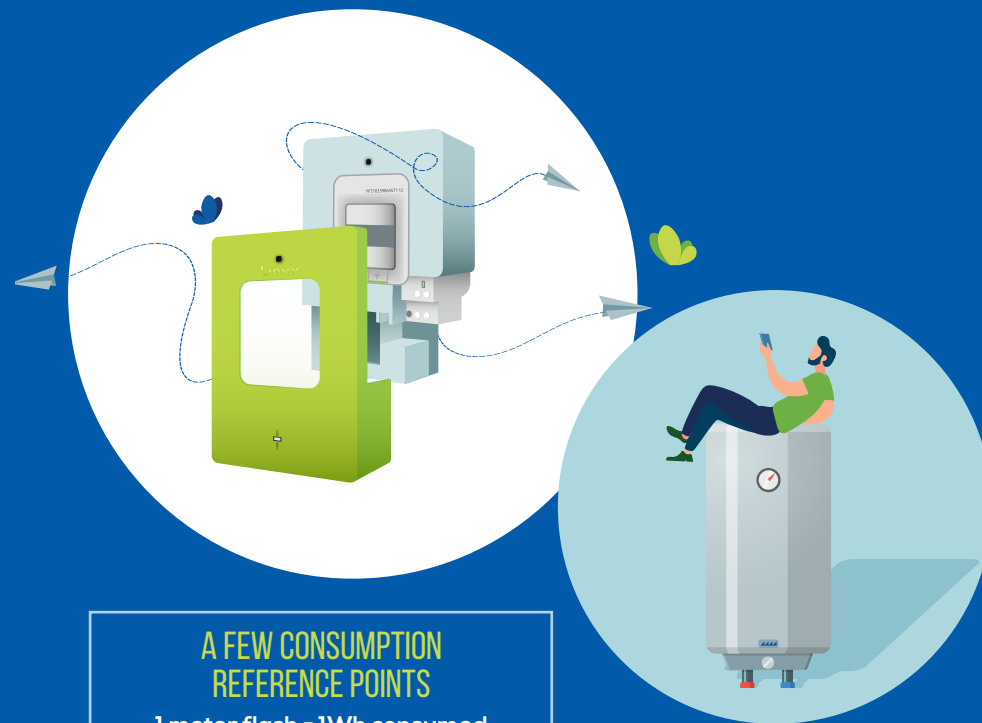
You can **obtain precise details** about the power you use in hourly steps, to identify how your devices affect consumption when they start up.

You can **compare your total consumption** with national and regional averages to see where your own consumption habits are located.

With such detailed knowledge of how you consume energy, you can direct and administer your system and control your energy expenditure by finding out where you stand.

## Meter tools for regulating your installation

Your GÉRÉDIS Linky meter allows you to control the starting up of your devices. Take off its upper cover to gain access to the dry contact of the device.



### A FEW CONSUMPTION REFERENCE POINTS

1 meter flash = 1Wh consumed


1 kWh (1000 Wh) :

 1.5 days

 3 to 5 hours

 1 wash

2kWh

 1 shower

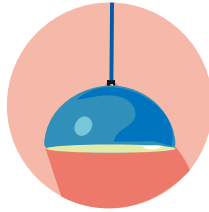
3kWh  
Average daily consumption per person

Just as you can force the operation of your water heater, you can control up to 10 devices directly from the meter, through a connection that could be wired or by remote transmission.

Energy savings also start with good routine practices. Here are some tips for reducing your electricity consumption.

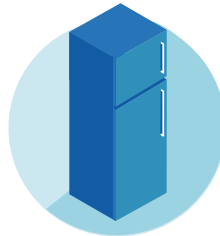
### *Nothing could be simpler, just turn it off!*

- ▶ There is no point in leaving lights on in rooms that are empty. Also think about your outdoor lighting...
- ▶ Do not shut out daylight, make the most of it.
- ▶ Devices on standby consume power: for instance, a television set.
- ▶ If you are going to be away for a few days, you could disconnect your Internet modem. That would also protect it from the voltage surges that occur during thunderstorms. [www.ademe.fr](http://www.ademe.fr)
- ▶ Trick for easier switching off: connect several devices to a single strip with a switch. You could thus switch them all off at once.



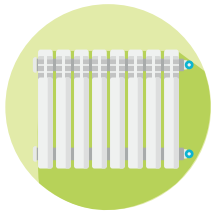
### *Kitchen*

- ▶ Keep a lid on saucepans while you cook, your food will heat faster.
- ▶ Your refrigerator is one of your most energy-consuming devices: let food cool before putting it into the refrigerator.
- ▶ Regularly dust your refrigerator, as dust could make it less efficient.
- ▶ Use the Eco mode of your dishwasher (and washing machine) and wait for a full load before you run them.



### *Heating and hot water*

- ▶ Turn your heating down by 1°C and when you are away.
- ▶ Install a programming and regulation system for daytime/night heating.
- ▶ Prefer showers to baths.
- ▶ Fit flow reducers to the ends of taps.
- ▶ Turn down your hot water thermostat.
- ▶ Insulate your home.



Check the energy label on every new purchase

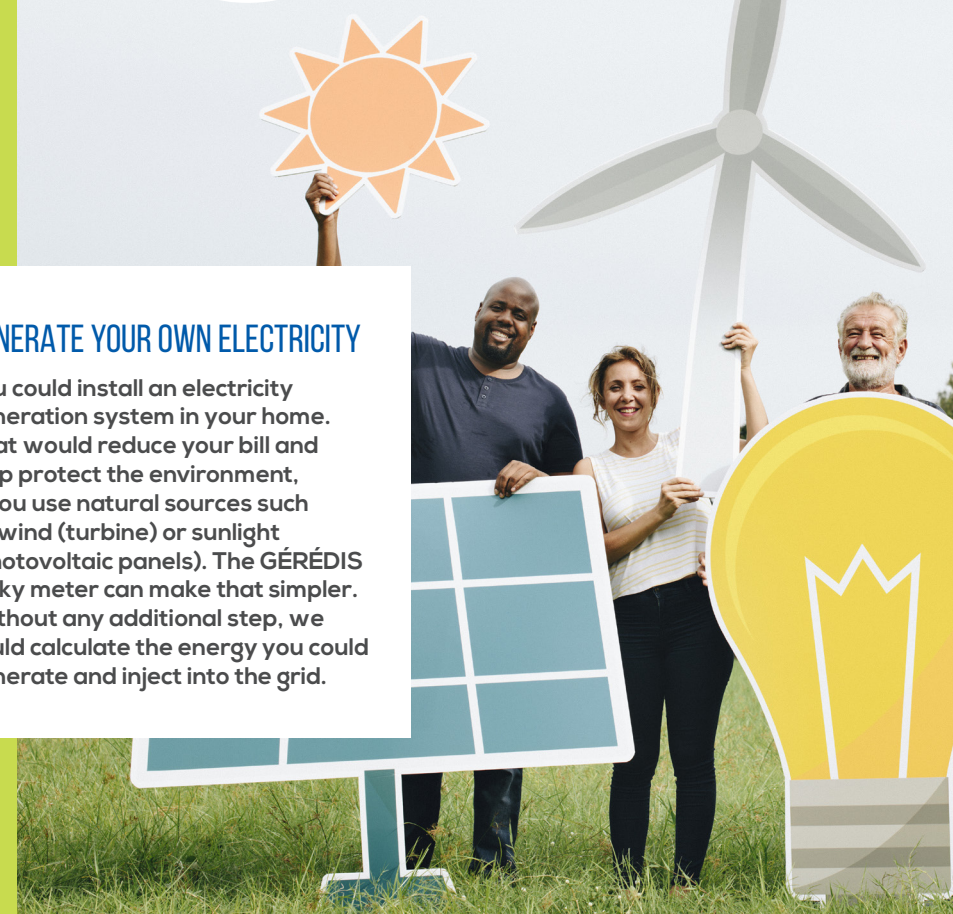


TIPS AND MORE INFORMATION ABOUT BEHAVIOURS THAT WOULD CUT YOUR ELECTRICITY BILL.

GÉRÉDIS works along with ADEME, a public energy transition agency, and France Rénov', the public service for home renovation. We support the energy saving information given out by these organisations.

### GENERATE YOUR OWN ELECTRICITY

You could install an electricity generation system in your home. That would reduce your bill and help protect the environment, if you use natural sources such as wind (turbine) or sunlight (photovoltaic panels). The GÉRÉDIS Linky meter can make that simpler. Without any additional step, we could calculate the energy you could generate and inject into the grid.



## ▲ Recharging your electric vehicle

### DO YOU USE AN ELECTRIC CAR? GOOD CHOICE!

By analysing your total electricity consumption from your GÉRÉDIS customer area, **you could see the impact of recharging your batteries on your consumption curve.** In that way, you could select the most inexpensive time slot to charge your car. You could also adjust your subscription if needed.



## ▲ Going even further: think of refurbishing your home to make it energy efficient

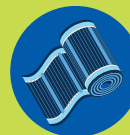


ADEME has found that housing is the biggest item in the budget of French households. Some building work could help you cut your expenses while improving comfort and increasing the value of your property.

### INSULATION

Heating accounts for more than half your consumption. To make your home more energy efficient, better insulation is very often the most economical solution.

- ▶ **Remember to make your doors and windows draught proof.** Double glazing may be needed in many areas.
- ▶ **Limit the heat lost through the roof and walls:** insulate your loft carefully, protect walls from the inside or outside. And remember the floor!



### VENTILATION

Good insulation also consists in letting air circulate in the home. In particular, it maintains a healthy indoor environment that is not excessively humid.

First of all, remember to open the windows and air your rooms, which is the least you could do. Humidity adjustable simple mechanical ventilation systems are more inexpensive, and suitable for homes. Heat-recovery ventilation offers maximum comfort.

### HEATING METHOD

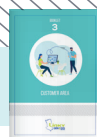
**Some heating methods are more economical than others:**

heat pump, heating with wood, new generation of electrical heaters... efficient solutions can be found to make savings and protect the environment.

### GRANTS

In order to encourage users to make energy refurbishments, many bodies offer grants, subsidies or other cost saving solutions such as tax credit, for example.

# GÉRÉDIS Linky, a local generator



Every stage of the GÉRÉDIS Linky project has a supporting document.

## CONTACT US

 [linky@geredis.fr](mailto:linky@geredis.fr)

 17 rue des Herbillaux - CS 18840  
79028 NIORT CEDEX

 [www.linkygeredis.fr](http://www.linkygeredis.fr)

 **0 801 90 22 04**  Free service & call



GÉRÉDIS is the manager of the electricity distribution system of SIEDS, and makes connections, offers customer service, meter reading and all technical operations. The task of GÉRÉDIS is to offer objective, transparent and non-discriminatory access to the system and guarantee the quality of your power supply regardless of your supplier.

GÉRÉDIS Deux-Sèvres - CS 18840 - 79028 NIORT CEDEX  
SASU with capital of €35,550,000 - RCS Niort 503 639 643

