

BOOKLET

3



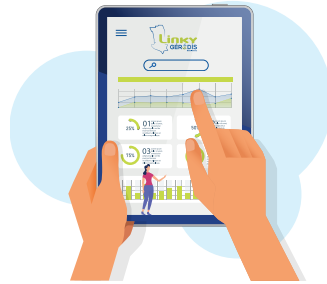
CUSTOMER AREA



01

# HOW DOES GÉRÉDIS LINKY WORK?

Your home has been fitted with a GÉRÉDIS Linky meter



To allow you to take full advantage of its features, a secure personal customer area has been provided to you. You can now analyse your electricity consumption and save money.



## BEING AWARE OF AND CLOSELY TRACKING CONSUMPTION

With its efficient technology, the GÉRÉDIS Linky smart meter enables users to know the total consumption of their homes.

### ► Data accessible online

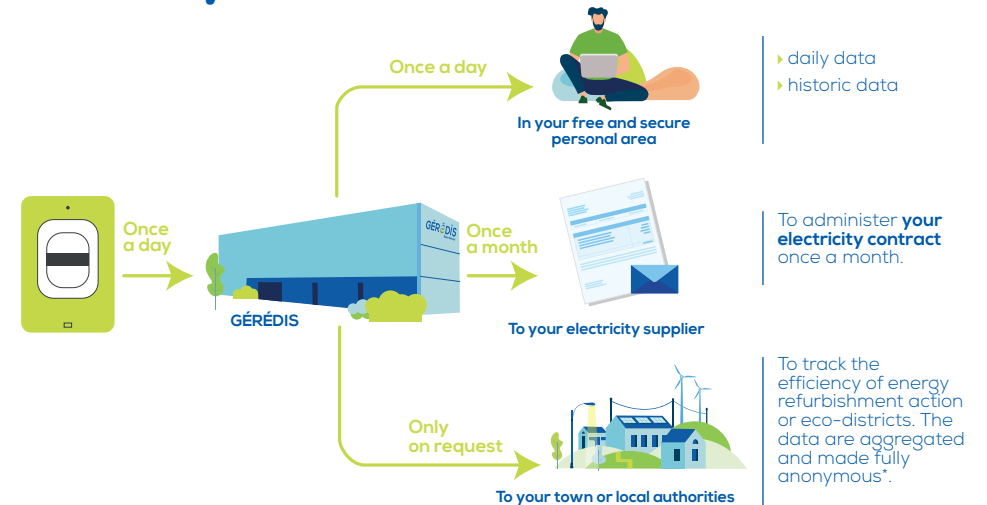
You can view your electricity consumption data at any time [espace-client.linkygeredis.fr](https://espace-client.linkygeredis.fr)

### ► You can see exactly what you consume every day

No more estimations! GÉRÉDIS Linky gives you an accurate idea of the daily consumption of your home, with daily readings. And, with your consent, the meter can report your consumption every hour for even closer tracking.

For any queries relating to data protection : [www.linkygeredis.fr](http://www.linkygeredis.fr)

## ▲ Data path



\* in accordance with the recommendations of the CNIL

## ▲ Protection of your personal data

### Which data are saved?

The meter just measures the total electricity consumption of your home. It has no knowledge of the consumption of your television set or dishwasher, or any personal details (address, name, bank account particulars etc.).

### Can my data be sold?

Your personal information belongs to you. It cannot be disclosed to a third party without your explicit consent. In order to cut your electricity bills, you could choose to send your consumption data to your electricity supplier. But in such a case, you and you alone select to disclose the information.

### Will my data be kept secure?

They will be encrypted, transmitted and stored in a fully secure system.



GÉRÉDIS guarantees the confidentiality of your data. We follow all the recommendations of the CNIL\*.

\*CNIL : Commission Nationale de l'Informatique et des Libertés [French data protection authority]

CUSTOMER AREA



GO TO THE WEBSITE: [espace-client.linkygeredis.fr](https://espace-client.linkygeredis.fr)

### You have already received your identifiers from Gérédis in the post.

The identifier stated below is the email address entered when your account was created.

The reference of your home is the reference of your service point (PDS), which can be found in your correspondence.

### You have not received your identifiers:

▶ You enter your details. In return, you will receive your identifiers by post to allow you to log in for the first time.

▶ Once you have received them, go to the home page once again and click on **Create account**

If you have several GÉRÉDIS Linky meters, for instance if you have a main residence and a holiday home, all your data will be brought together in the same area.

## Managing your account

### ▶ Editing your personal information or deleting your account

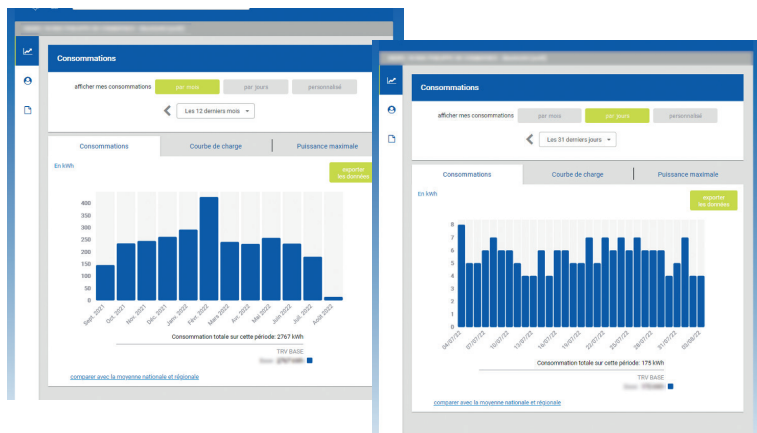
### ▶ Editing your password

## FEATURES OF YOUR CUSTOMER AREA

### Your consumption data

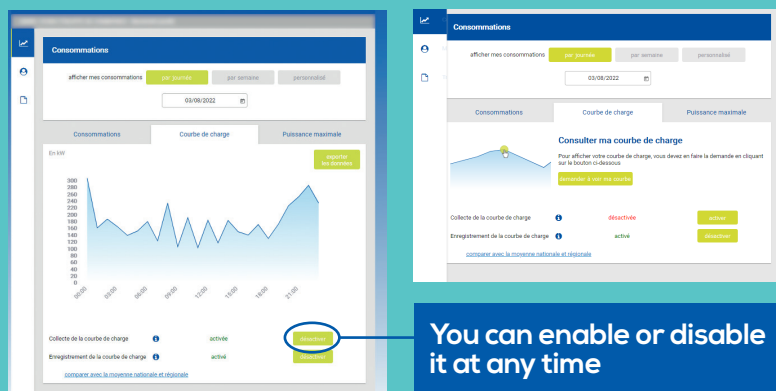
You can view them by selecting the display period. By default, the system offers a monthly chart, but you can change that for a **daily, weekly or other view**.

You can also see consumption details **based on the time slots provided in your energy contract**, such as your basic consumption, your off-peak consumption or your peak hour consumption.



### Your load curve

This is the average power required by your installation over a given period. You could drill down your view to half-hour intervals. By analysing the curve, you can adjust your behaviour, identify the devices that consume too much in standby mode etc.

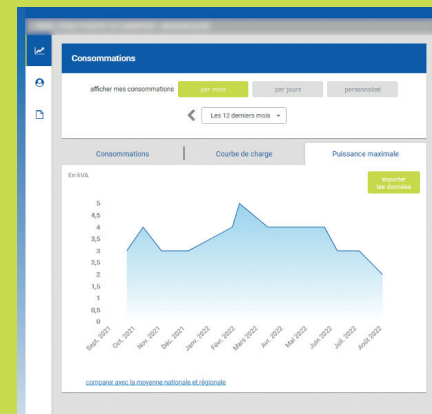


You can enable or disable it at any time

### Your power peak

When, in the day, does your installation demand maximum power?

Is the power you have subscribed for suitable to your usage? Thanks to that information, you could optimise the power rating of your contract.



### Subscribing to consumption data



### EXPORTING YOUR DATA

This tool allows you to export your consumption data and download them in an Excel file for your own analysis. You could also select to send them directly by email to a third party, for instance your electricity supplier, to optimise your contract. You can adjust the frequency and select the sending date.

# GÉRÉDIS Linky, a local generator



Every stage of the GÉRÉDIS Linky project has a supporting document.

## CONTACT US

 [linky@geredis.fr](mailto:linky@geredis.fr)

 17 rue des Herbillaux - CS 18840  
79028 NIORT CEDEX

 [www.linkygeredis.fr](http://www.linkygeredis.fr)

 **0 801 90 22 04**  Free service  
& call



GÉRÉDIS is the manager of the electricity distribution system of SIEDS, and makes connections, offers customer service, meter reading and all technical operations. The task of GÉRÉDIS is to offer objective, transparent and non-discriminatory access to the system and guarantee the quality of your power supply regardless of your supplier.

GÉRÉDIS Deux-Sèvres - CS 18840 - 79028 NIORT CEDEX  
SASU with capital of €35,550,000 - RCS Niort 503 639 643

